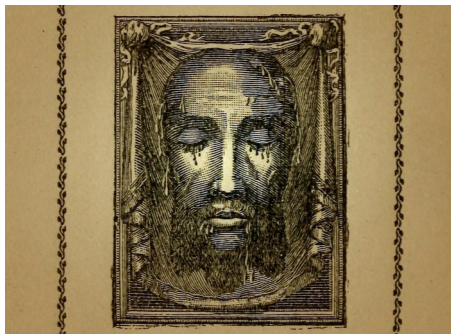
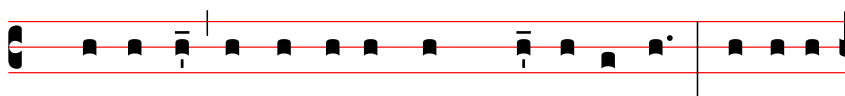


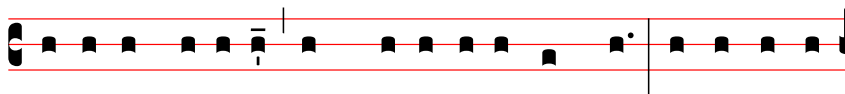
CHAPLET OF THE HOLY FACE



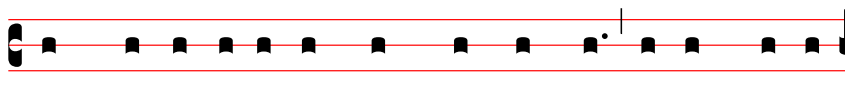
De-us in adju-tó-ri-um me-um inténde.



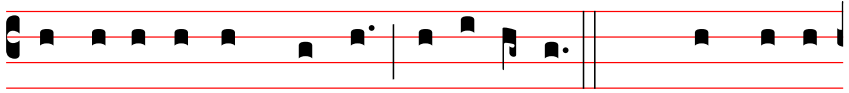
R̃. Domi-ne ad adjuvándum me festí-na. Gló-ri-a



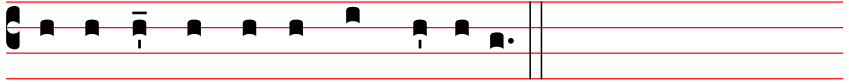
Patri, et Fí-li-o et Spi-rí-tu-i Sancto. Si-cut e-rat



in princí-pi-o, et nunc, et semper et in saécu-

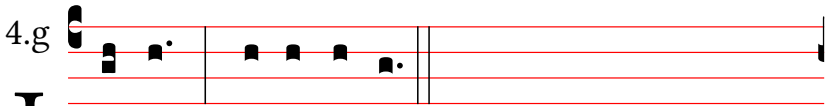


la sæcu-ló-rum. Amen. Alle-lú-ia. Or : Laus ti-bi

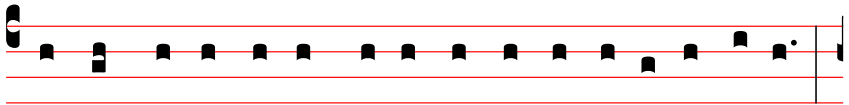


Dómi-ne Rex æ-térnæ gló-ri-æ.

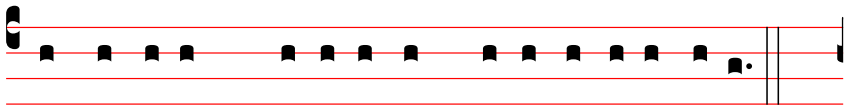
Next is prayed 5 sets of Jesu miserére, Surge Dómine x 6, Glória Patri. One set of Jesu miserére, Surge Dómine x 3, Glória Patri.



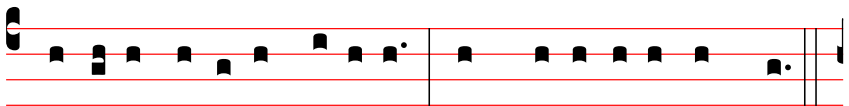
Je-su * mi-se-ré-re



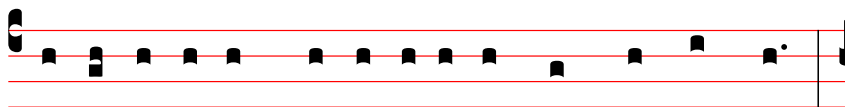
Surge Dómi-ne et dissi-péntur in-imí-ci tu-i *



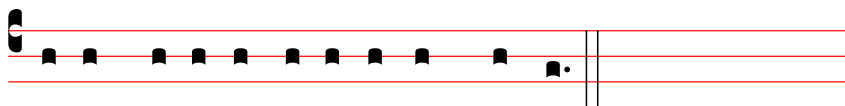
et fú-gi-ant qui odé-runt te a fá-ci-e tu-a.



Gló-ri-a Patri, et Fí-li-o, * et Spi-rí-tu-i Sancto.

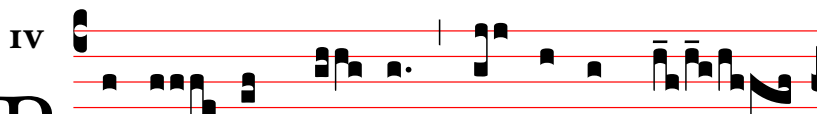


Sic-ut e-rat in princí-pi-o, et *nunc*, et **semper**, *

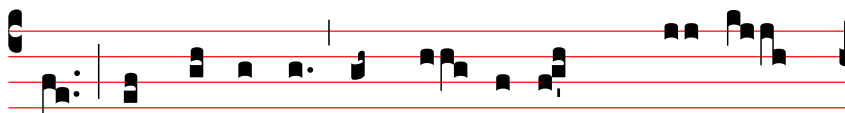


et in sæcu-la sæcu-ló-rum. Amen.

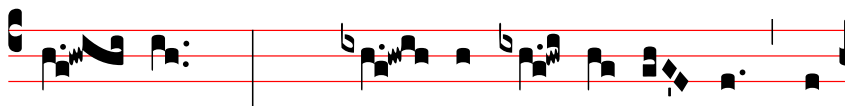
Finishing with this prayer:



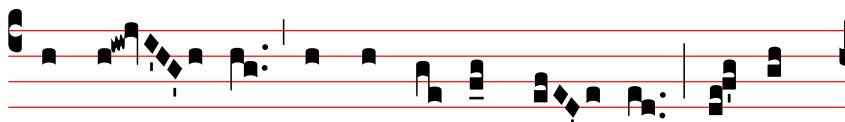
P Ro-té-ctor no-ster * á-spi-ce, De-



us, et réspi-ce in fá-ci-em Chri-sti



tu-i: qui-a mé-li-or est di-



es u-na in á-tri-is tu-is su-per

A musical staff with five red lines. The notation begins with a treble clef (C-clef on the first line) and a common time signature (C). The melody consists of quarter notes and eighth notes, with a prominent slur over the first two measures. The lyrics 'míl-li-a. A-men' are written below the staff, with 'míl-' under the first measure, 'li-' under the second, 'a.' under the third, and 'A-men' under the fourth. The staff ends with a double bar line.